



وزارة التربية والتعليم

الإدارة المركزية لتطوير المناهج

إدارة تنمية مادة الرياضيات

أداءات ونقيمات لمنهج الرياضيات

للفصف الثانى الثانوى [علمى]

للعام الدراسى 2024 / 2025

الرياضيات

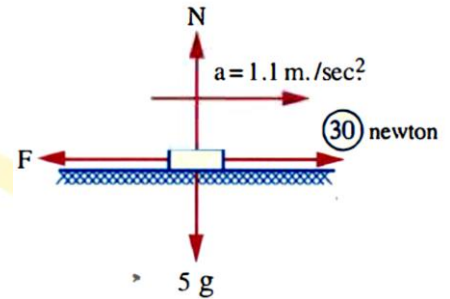
Homework Week: (13) Semester (2) Mathematics - Applications
Grade: Second Secondary (Science)

(1) In the opposite figure:

A body with a mass of 5 kg is placed on a rough horizontal plane.

The kinetic friction force is F .

Find the coefficient of kinetic friction (μ_k) between the body and the plane.

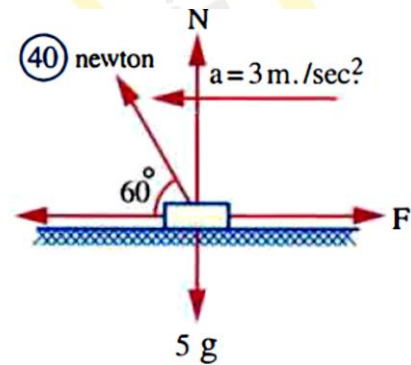


(2) In the opposite figure:

A body with a mass of 5 kg is placed on a rough horizontal plane.

The kinetic friction force is F .

Find the coefficient of kinetic friction (μ_k) between the body and the plane.

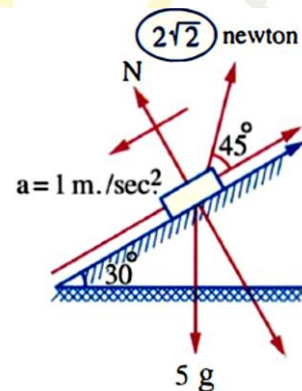


(3) In the opposite figure:

A body with a mass of 5 kg is placed on a rough inclined plane.

The kinetic friction force is F .

Find the coefficient of kinetic friction (μ_k) between the body and the plane.



(4) A body with a mass of 20 kg rests on a rough horizontal plane with a kinetic friction coefficient $\frac{1}{7}$. The body is then pulled by a horizontal force, causing the body to move from rest with an acceleration of 300 cm/s^2 . Find the magnitude of the pulling force.



- (5) A body with a mass of 2 kg is placed on a rough horizontal plane. The body is then pulled by a horizontal force, causing it to move a distance of 630 cm in 3 seconds, starting from rest. If the coefficient of kinetic friction between the body and the plane is $\frac{1}{2}$, find the magnitude of the pulling force, measured in Newton.
- (6) A body is thrown at a speed of 19.6 m/s upwards in the direction of the line of greatest slope on a rough inclined plane that forms an angle of 30° with the horizontal. If it is known that the body reaches rest after 2 seconds, find the coefficient of kinetic friction between the body and the plane.
- (7) A rough inclined plane is 2.5 m long and 2 m high. Find the velocity with which an object is thrown from the bottom point of the plane in the direction of the line of greatest slope upwards until it barely reaches the highest point of the plane, knowing that the coefficient of kinetic friction between the body and the plane is $\frac{1}{3}$.
- (8) A rough inclined plane is 10 m long and 6 m high. An object is placed at the top of the plane and begins its movement from rest. If the coefficient of kinetic friction is $\frac{11}{98}$ between the body and the plane, calculate: the speed with which the body reaches the base of the plane.



- (9) A rough inclined plane is 10 meters long and 6 meters high. A body is placed at the top of the plane and begins its movement from rest. If the coefficient of kinetic friction between the body and the plane is $\frac{11}{98}$, calculate: the time required for the body to reach the base of the plane .
- (10) A body descends from rest on the line of greatest inclination of a rough plane inclined to the horizontal at an angle of cosine $\frac{4}{5}$. If the body's speed becomes 4.9 m/s after 2.5 second from the start of the movement, find: the coefficient of kinetic friction between the body and the plane .