



برعاية معالي وزير التربية والتعليم
السيد الاستاذ / محمد عبد اللطيف
وتوجيهات مساعد الوزير لشئون تطوير المناهج التعليمية
والمشرف على الادارة المركزية لتطوير المناهج

د/ اكرم حسن

تقييمات أسبوعية - الأحياء

الصف الثاني الثانوى

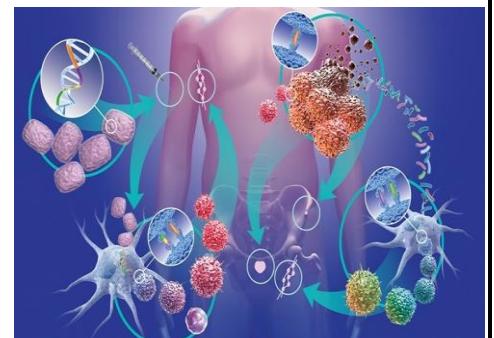
لجنة الاعداد والمراجعة

خبراء مكتب تنمية مادة العلوم

اشراف علمى

مستشار العلوم

د/ عزيزه رجب خليفة





Weekly evaluation (5)

A

Choose the correct answer:

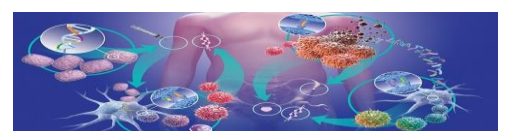
- 1- It happens in phototropism and geotropism to roots in the horizontal position.
 - a- auxins act in the same direction as the effect.
 - b- auxins move away from the effector.
 - c- auxins stop cells from growing.
 - d- auxins stimulate cells to grow.
- 2- Which of the following statements agree with the nature of the action of auxins?
 - a- Whenever its concentration in the root cells increases, it stimulates their elongation.
 - b- Whenever its concentration in the stem cells decreases, it inhibits their elongation..
 - c- It is not affected by external influences in all circumstances.
 - d- It flows from top to bottom in the horizontal position of the gesture.

Write what the following expressions mean:

- 1- Chemicals substances secreted by the growing tip of the plant and greatly affected by external conditions.
- 2- The response of the growing plant to an external stimulus, which is Earth's gravity, so the plant organs move towards it or away from it.

Give reasons for the following:

- 1- When the plant is in the vertical (natural) position, the stem grows straight up and the root grows down.





Weekly evaluation (5)

B

Choose the correct answer:

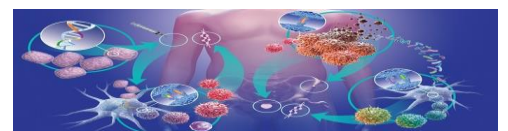
- 1- Cells whose division rate increases due to the accumulation of auxin in them are...
 - a- the side of the stem facing the light.
 - b- the side of the root facing the light.
 - c- the upper side of a horizontally placed root.
 - d. the underside of a stem placed horizontally.
- 2- Which of the following statements is incorrect?
 - a- The stem is positive for phototropism.
 - b- The stem is negative in geotropism.
 - c- The root is negative for phototropism.
 - d- The root has positive geotropism

Write what the following expressions mean:

- 1- The plant's response to an external stimulus, which is humidity, so plant organs move toward or away from it.
- 2- The tip of the stem bends upward against the Earth's gravity when the plant is in a horizontal position.

Give reasons for the following:

The root is a positive hydrotropic.





Weekly evaluation (5)

C

Choose the correct answer:

- 1- Which of the following statements does not apply to auxins?
 - a- It is greatly affected by environmental factors.
 - b- It cannot enter during the blocks of agar.
 - c- It is used by humans to increase the rate of plant growth.
 - d- Chemicals substances secreted by plant buds.

- 2- Which of the following cases has a tropism opposite to the direction of auxin accumulation?
 - a- A stem placed horizontally and another vertically exposed to light from one side.
 - b- A root placed horizontally and another vertically exposed to water from one side.
 - c- A stem and root in an upright position exposed to light from one side.
 - d- A stem and root in a horizontal position.

Write what the following expressions mean:

- 1- The root tip bends downward with gravity when the plant is in a horizontal position.
- 2- The response of the growing plant to an external stimulus, which is Earth's gravity, so the plant organs move towards it or away from it.

Give reasons for the following:

Stems are negative in geotropism.

