



برعاية معالي وزير التربية والتعليم

السيد الاستاذ / محمد عبد اللطيف

وتوجيهات مساعد الوزير لشئون تطوير المناهج التعليمية
والمشرف على الادارة المركزية لتطوير المناهج

د/ اكرم حسن

تقييمات أسبوعية – الأحياء – انجليزي

الصف الثاني الثانوي

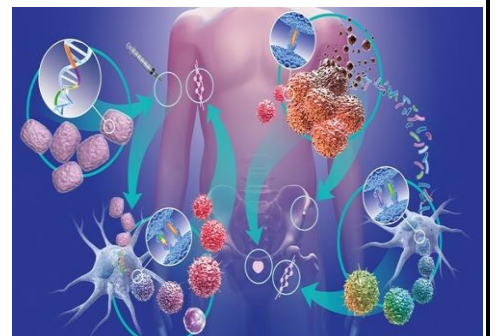
لجنة الاعداد والمراجعة

خبراء مكتب تنمية مادة العلوم

اشراف علمي

مستشار العلوم

د/ عزيزه رجب خليفة





Weekly evaluations

Thirteenth week

A

1- Choose the correct answer:

1- The effects of the sympathetic nervous system is

- a- Constriction of the eye pupil
- b- Dilation of the eye pupil
- c- Increased secretion of saliva
- d- Decreased adrenaline secretion

2- Mention the scientific term:

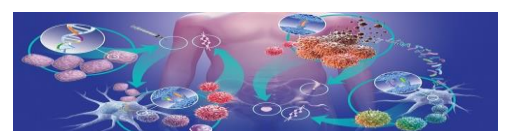
- The unit of nerve activity

3- What is the effect of the sympathetic nervous system on each of the following?

- 1- The urinary bladder.
- 2- The pulmonary vein.

4- Complete:

- The levels of blood sugar increase the effect of the work of the sympathetic nervous system on





B

2- Choose the correct answer:

1- The fibres of parasympathetic nervous system originate from

- a- thoracic and sacral regions.
- b- thoracic and lumbar regions.
- c- sacral regions and brainstem.
- d- lumbar regions and brainstem.

2- Mention the scientific term:

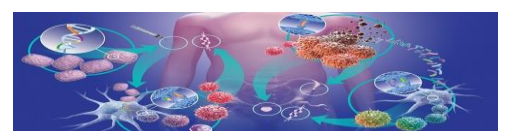
- The mixed nerves and their number are 62 nerves.

3- What is the effect of the sympathetic nervous system on each of the following?

- 1- The heart.
- 2- The liver.

4- Complete:

- The is considered the unit of nervous activity.





C

1- Choose the correct answer:

1- The fibres of sympathetic nervous system originate from

- a- the thoracic and sacral regions
- b- the thoracic and lumbar regions
- c- the sacral region and brainstem
- d- the lumbar region and brainstem

2- Mention the scientific term:

- Nerves that carry nerve impulses from the hand to the brain

3- What is the effect of the sympathetic nervous system on each of the following?

- 1- The heart.
- 2- The liver.

4- Complete:

- The parasympathetic nervous system is not connected to

