



برعاية معالي وزير التربية والتعليم
السيد الاستاذ / محمد عبد اللطيف
وتوجيهات مساعد الوزير لشئون تطوير المناهج التعليمية
والمشرف على الادارة المركزية لتطوير المناهج

د/ اكرم حسن

أداءات منزلية- الأحياء

الصف الثاني الثانوى

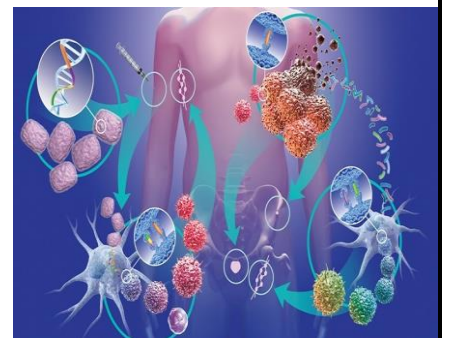
لجنة الاعداد والمراجعة

خبراء مكتب تنمية مادة العلوم

اشراف علمى

مستشار العلوم

د/ عزيزه رجب خليفة





Fifth Week

Home performances

1- Define the following:

- a- Auxins.
- b- Geotropism.

2- Give reasons for the following:

- a- The root is a positive hydrotropism.
- b- Root cells far from light do not elongate despite the increase in the percentage of auxins in them.

3- Explain the relationship between each two:

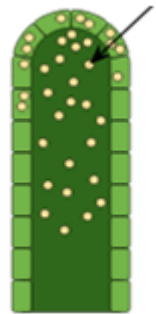
- a- The geotropism of the root and the percentage of auxins in its growing apex
- b- The direction of sunlight to which the plant is exposed and the direction of stem growth

4-

The growing tip in front of you was exposed to moisture from one side. Determine the effect of this on the growth of the developing growing tip if it is located in:

- 1- The root.
- 2- The stem.

Auxins



5- The figure in front of you contains a mistake. Identify the mistake with an explanation:

- 1- The mistake.
- 2- The explanation.

