



برعاية معالي وزير التربية والتعليم
السيد الأستاذ / محمد عبد اللطيف
وتوجيهات مساعد الوزير لشئون تطوير المناهج التعليمية
والمشرف على الإدارة المركزية لتطوير المناهج

د/ اكرم حسن

تقييمات صفية - أحياء

الصف الثاني الثانوي

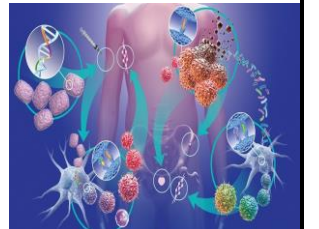
لجنة الاعداد والمراجعة

خبراء مكتب تنمية مادة العلوم

اشراف علمي

مستشار العلوم

د/ عزيزه رجب خليفة



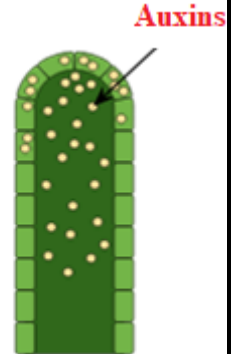


Fifth Week

Class Performance

Choose the correct answer from the following:

1- The figure in front of you shows the growing tip of a plant stem and the distribution of auxins in it.



Determine the direction in which the sunlight fall on this growing tip?

- a- From the right
- b- From the left
- c- Vertically
- d- Horizontally

2- Which of the following occurs when the amount of indole acetic acid increased in the growing tips of the roots of a plant...

- a- The elongation of root cells increased.
- b- Elongation of root cells inhibited.
- c- Elongation of stem cells increased.
- d- Elongation of stem cells inhibited.

3- Which of the following occurs when the root of a growing plant is exposed to irrigation from one direction?

- a- The stem bends towards the water.
- b- The stem bends against the direction of the water
- c- The root bends towards the water.
- d- The root bends against the direction of the water.

Write what the following statments mean:

- 1- The scientist who conducted experiments to verify Boysen-Jensen's experiments.
- 2- The plant's response to an external stimulus, which is humidity, so plant organs move toward or away from it.

Give reasons for the following:

- 1- The root is a positive geotropic.
- 2- The effect of auxins varies depending on their location in the plant.
- 3- The growing stem is not affected when the plant is placed in an upright position.

The figure in front of you contains a mistake. Identify the mistake with an explanation:

- 1- The mistake:
- 2- The explanation:

