



برعاية معالي وزير التربية والتعليم
السيد الاستاذ / محمد عبد اللطيف
وتوجيهات مساعد الوزير لشئون تطوير المناهج التعليمية
والمشرف على الادارة المركزية لتطوير المناهج

د/ اكرم حسن

أداءات وتقييمات

علوم الصف السادس الابتدائي

لجنة الاعداد والمراجعة

خبير بمكتب مستشار العلوم
توجيه الجيزة

داليا علي محمد علي
رانيا محمد المعداوي

اشراف علمي

مستشار العلوم

د/ عزيزه رجب خليفة





Subject: Science
Grade: 6
Unit: 4: Adaptation

WEEKLY EVALUATION
11th WEEK



Group (A)

1- **Complete**: A type of highly fertile soil called

2 - **Write what the phrase indicates**:

The practice of excessive grazing of animals on grasslands or pasture
(.....)

3- **Choose the correct answer**: Grasslands such as savannas are
characterized by being

(Dry and loose – hard – wet – rocky)

4- **What happens if**: Heavy rain falls on the soil (in terms of the presence
of minerals in the soil).....

5 - **Explain the scientific reason**:

Clay soil acts as a water filter.....

Group (B)

1- **Complete**: A type of soil with high porosity is called.....

2 - **Write what the phrase indicates**:

Continuous and random deforestation (.....)

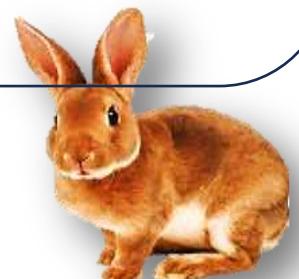
3- **Choose the correct answer** Swamps are characterized by being

(Dry – Wet – Sandy and Loose – Extremely Hot)

4- **What happens if**: Heavy rain falls on the soil (in terms of the amount
of air in the soil).....

5 - **Explain the scientific reason**:

Potatoes can be planted in sandy soil.....





Group (C)

1- **Complete**: A type of soil with low porosity is called.....

2 - **Write what the phrase indicates**:

The transformation of fertile lands into dry and unproductive lands
(.....)

3- **Choose the correct answer** Grasses grow in a environment .
(High porosity – low porosity – water-retaining – highly humid)

4- **What happens if**: heavy rain falls down on the soil (in terms of
nutrients)?

5 - **Explain the scientific reason**:

Farmers use animal manure to restore the soil.....

