



# برعاية معالي وزير التربية والتعليم السيد الاستاذ / محمد عبد اللطيف

وتوجيهات مساعد الوزير لشئون تطوير المناهج التعليمية  
والمشرف على الادارة المركزية لتطوير المناهج

**د/ أكرم حسن**

اداءات وتقييمات

**Science- grade 6**

**علوم - الصف السادس الابتدائي**

لجنة الاعداد والمراجعة

**خبراء مكتب تنمية مادة العلوم**

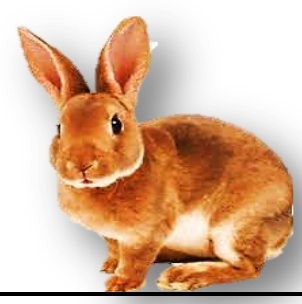
اشراف علمي

مستشار العلوم

**د/ عزيزه رجب خليفة**

ادارة تنمية مادة العلوم

2024 - 2025





## First unit: What is a system

### General revision

#### (worksheet 9)

Name: .....

Class: .....

#### 1- Put (✓) or (X):

1-Water and wastes are stored in the vacuole. ( )

2A human can control the movement of blood in his body. ( )

3- The brain does not respond when feeling stressed. ( )

4- Plant cells and animal cells are completely similar in structure . ( )

#### 2- Choose the correct answer:

1- Which of the following muscles is voluntary?.....

- a. stomach muscles                      b. The muscles of small intestine  
c. The muscles of the esophagus                      d. neck muscles

2- The control center of the cell and is responsible for cell division is.....

- a. mitochondria      b. nucleus      c. golgi apparatus      d. chloroplast

3- The factors on which gravitational force depends on.....

- a. mass and shape                      b. size and shape  
c. mass and volume                      d. distance and mass

4-The electrical insulating material is .....

- a. rubber                      b. iron                      c. copper                      d. aluminum

#### 3-Write the scientific term of each of the following:

1-A devise used to examine very small things. ( )

2- Small electric charge moving in the wires in a closed electrical circuit.

( )

