



برعاية معالي وزير التربية والتعليم  
السيد الاستاذ / محمد عبد اللطيف  
وتوجيهات رئيس الادارة المركزية لتطوير المناهج  
د/ اكرم حسن

اداءات وتقييمات

Science- grade 6

الصف السادس الابتدائي

لجنة الاعداد والمراجعة

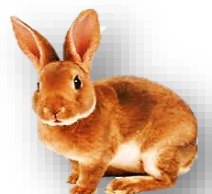
خبراء مكتب تنمية مادة العلوم

اشراف علمي

مستشار العلوم

د/ عزيزه رجب خليفة

2024 - 2025





Primary sixth Year – Science  
First Term – second Week

## First unit : What is a system

### First concept: The cell as a system

(week test 2-A)

#### **Question 1: Complete the following:**

The ..... was the first person to use the word *cell* .

#### **Question 2 : Write what the following statement refers to**

Living organisms with more than one cell . ( ..... )

#### **Question 3: Explain what is meant by selectively permeable.**

.....

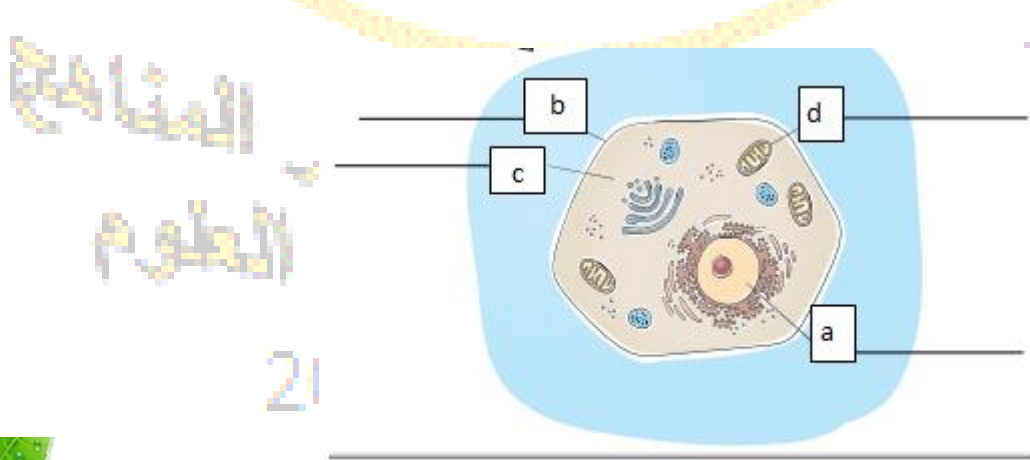
#### **Question 4: What happens if**

There is no mitochondria inside the cell.

.....

#### **Question 5: In the picture in front of you Explain what the letter (c) refers to.**

**-specify its function.**





Primary sixth Year – Science  
First Term – second Week

First unit : What is a system

First concept : The cell as a system  
(week test 2-B)

**Question 1: Complete the following:**

The Cell wall of plant cell made of.....

**Question 2: Write what the following statement refers to.**

A group of tissues jointed together and involved in performing a particular function  
( ..... )

**Question 3: Explain what is meant by cellular respiration.**

.....

**Question 4: What happens if**

There is no Cytoplasm inside the cell.

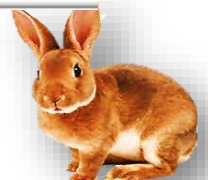
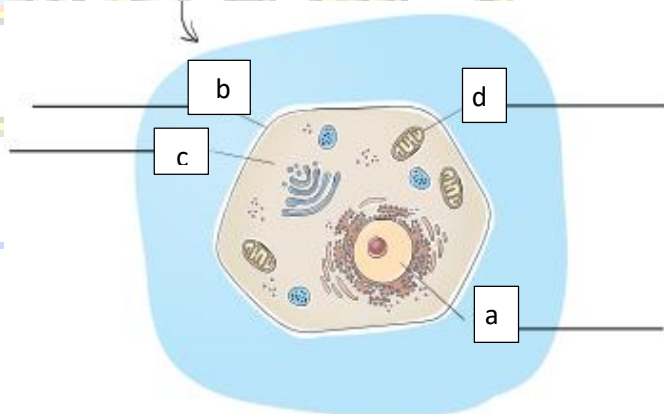
.....

**Question 5: in the picture in front of you Explain what the letter (a) refers to.**

**- specify its function.**

الإدارة العامة للتعليم والتعليم التقني  
إدارة تنمية مادة العلوم

2024





Primary sixth Year – Science  
First Term – second Week



## First unit: What is a system

### First concept: The cell as a system

(week test 2-C)

#### **Question 1: Complete the following:**

The specialized types of plant cell perform .....process .

#### **Question 2: Write what the following statement refers to.**

Structures within the cell that have a special functions ( ..... )

#### **Question 3: Explain the difference between unicellular and multicellular organisms..**

.....

#### **Question 4: What happens if**

There is no nucleus inside the cell.

.....

.....

#### **Question 5: in the picture in front of you Explain what the letter (d) refers to.**

**- specify its function.**

